

LDL Series

Linear Actuator

Cost-Competitive Electric Alternative to Pneumatics.

Many users of pneumatic cylinders in industrial automation are looking for electric actuator alternatives for a number of reasons: **Control, Operating Cost, Life and Performance.**

The LDL has been designed as a cost-competitive alternative to pneumatics. The LDL features several innovative cost reduction elements that result in a low list price.

- Printed Coil technology with integrated SMAC encoder reader head.
- Laser cut parts resulting in housing and end-cap process times in the 5 to 30 second range.
- 1 piece multi-pole neodymium magnets.
- Precision linear guide life tested to 500 million life cycles.
- Automatic assembly done using SMAC's own products.



LDL Series

Stroke [mm]	10, 25, 50, 75 and 100
Peak Force [N]	15 - 94 (48VDC)
Encoder Resolution [μm]	5 standard, 1 optional

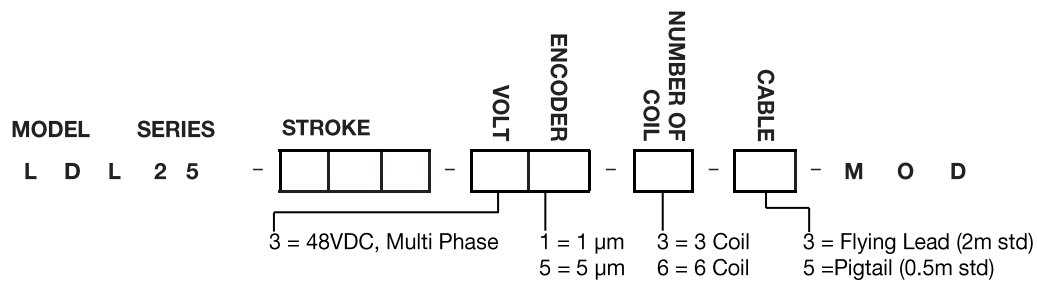
SMAC Advantages

- Cost competitive
- Fully programmable in force, position and velocity, on the fly change capability.
- SMAC's Patented '**Soft-Land**' capability enables the unit to gently land on a delicate component, then apply a controlled force to avoid damage of both the component and the actuator.
- Built in controller available with various communication protocols.
- Higher cycle rates.
- Longer cycle life.
- The ability to perform tasks and verify its quality at the same time.

SMAC

Moving Coil Actuators

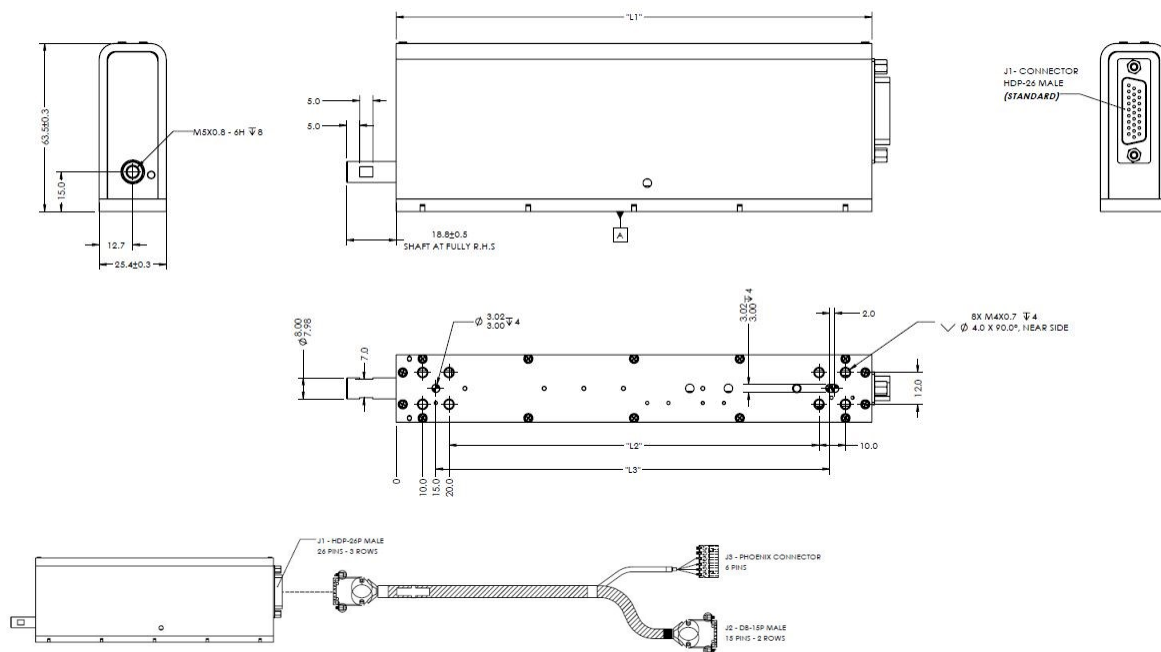
PART NUMBERING



SPECIFICATION

Model	Voltage [DC]	Size: LxWxH [mm]	Stroke [mm]	Peak Force [N]	Force Constant [N/A]	Peak Current [Amp]	Moving Mass [kg]	Weight [kg]
LDL15-010-35-3	48	110x15x70	10	15	4.4	3.4	0.07	0.5
LDL25-010-35-6	48	155x63.5x25.4	10	30	8.4	3.6	0.1	0.9
LDL25-025-35-6	48	155x25.4x63.5	25	30	8.4	3.6	0.1	0.9
LDL25-050-35-6	48	180x25.4x63.5	50	30	8.4	3.6	0.11	1.1
LDL25-075-35-6	48	220x25.4x63.5	75	30	8.4	3.6	0.12	1.3
LDL25-100-35-6	48	260x25.4x63.5	100	30	8.4	3.6	0.13	1.6
LDL40-025-35-3	48	190x40x120	25	90	41	2.2	0.45	4
LDL40-050-35-3	48	190x40x120	50	90	41	2.2	0.45	4
LDL40-075-35-3	48	225x40x120	75	90	41	2.2	0.45	4.5
LDL40-100-35-3	48	250x40x120	100	90	41	2.2	0.55	5.2

DIMENSIONS (LDL25 Series)



Sold & Serviced By:

ELECTROMATE

Toll Free Phone (877) SERV098

www.electromate.com

sales@electromate.com

Specifications subject to change without notice. Any electrical values could vary up to 20%.